

Health Care Facilities

SOUTH BRUNSWICK TWP

MIDDLESEX

Legend

Counties

SOUTH BRUNSWICK TWP

Hospitals

Nursing Homes

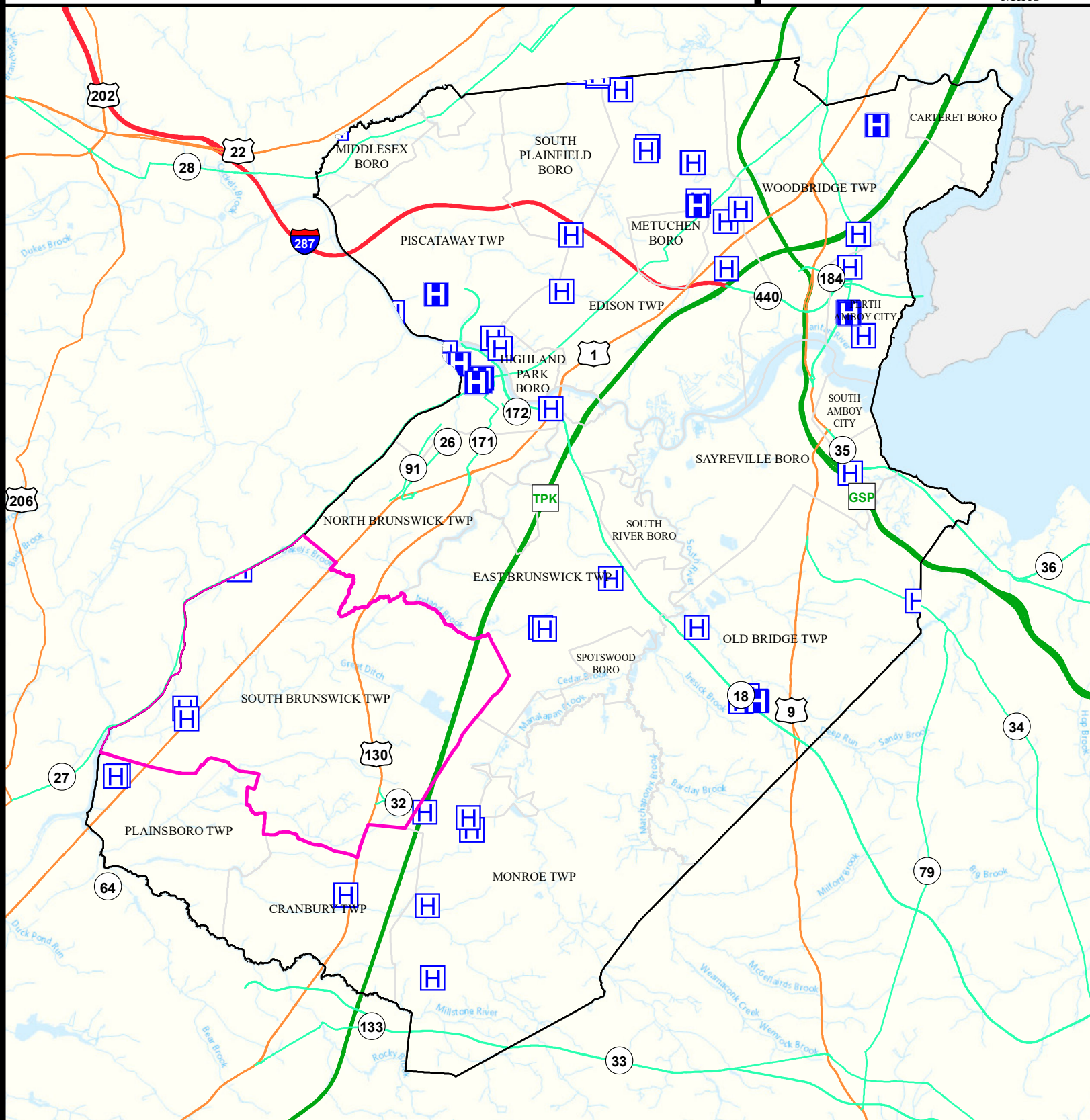
Municipalities



Date: 9/22/2022

0 1.5 3

Miles





Air Cancer Risk

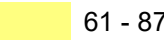




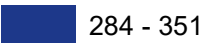


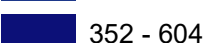
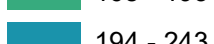
SOUTH BRUNSWICK TWP

MIDDLESEX


Legend

-  Counties
-  SOUTH BRUNSWICK TWP

Risk per Million

	61 - 87		128 - 145		244 - 283
	88 - 108		146 - 167		284 - 351
	109 - 127		168 - 193		352 - 604
			194 - 243		

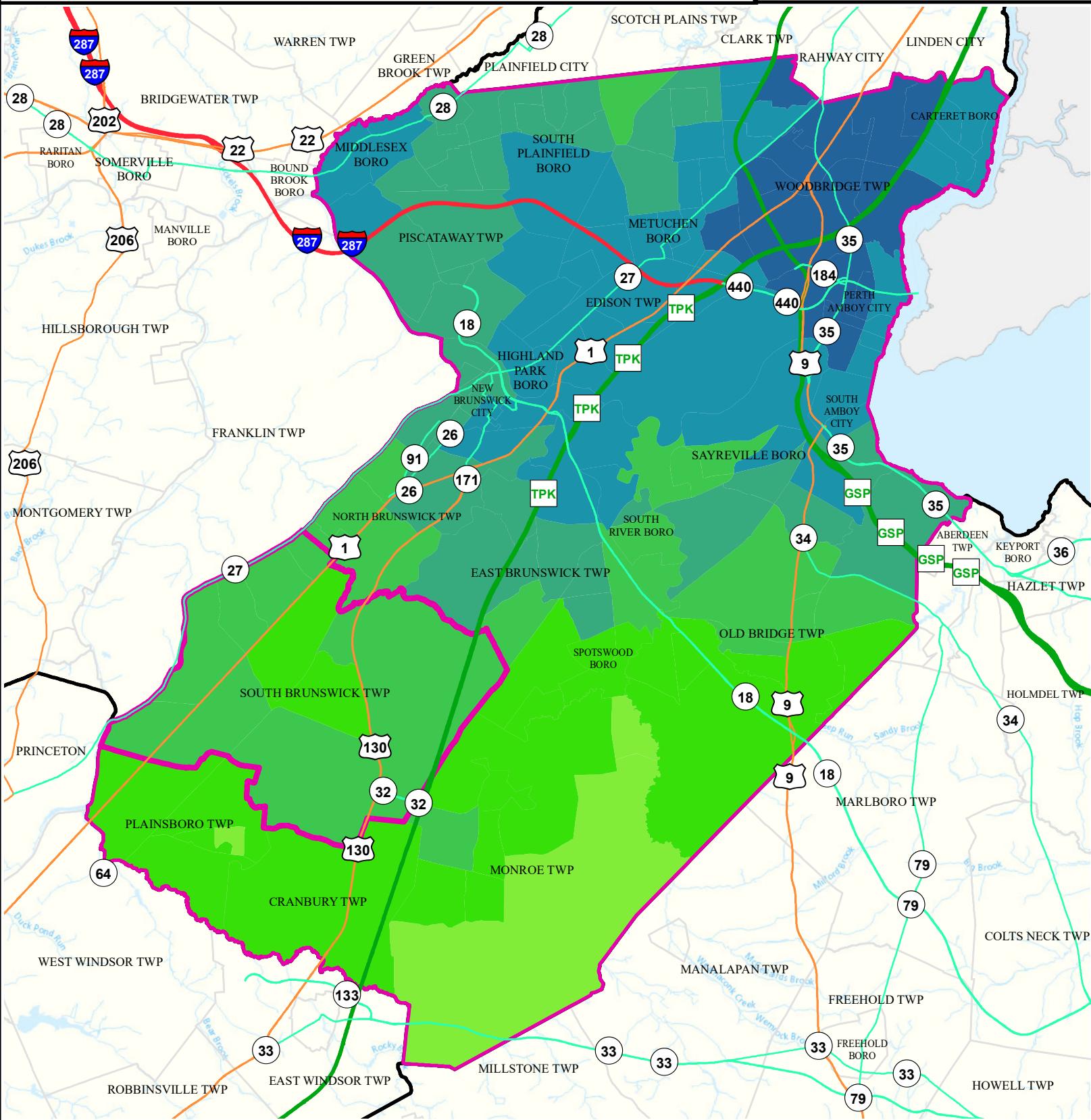
N



Date: 9/26/2022

0 1.5 3

Miles










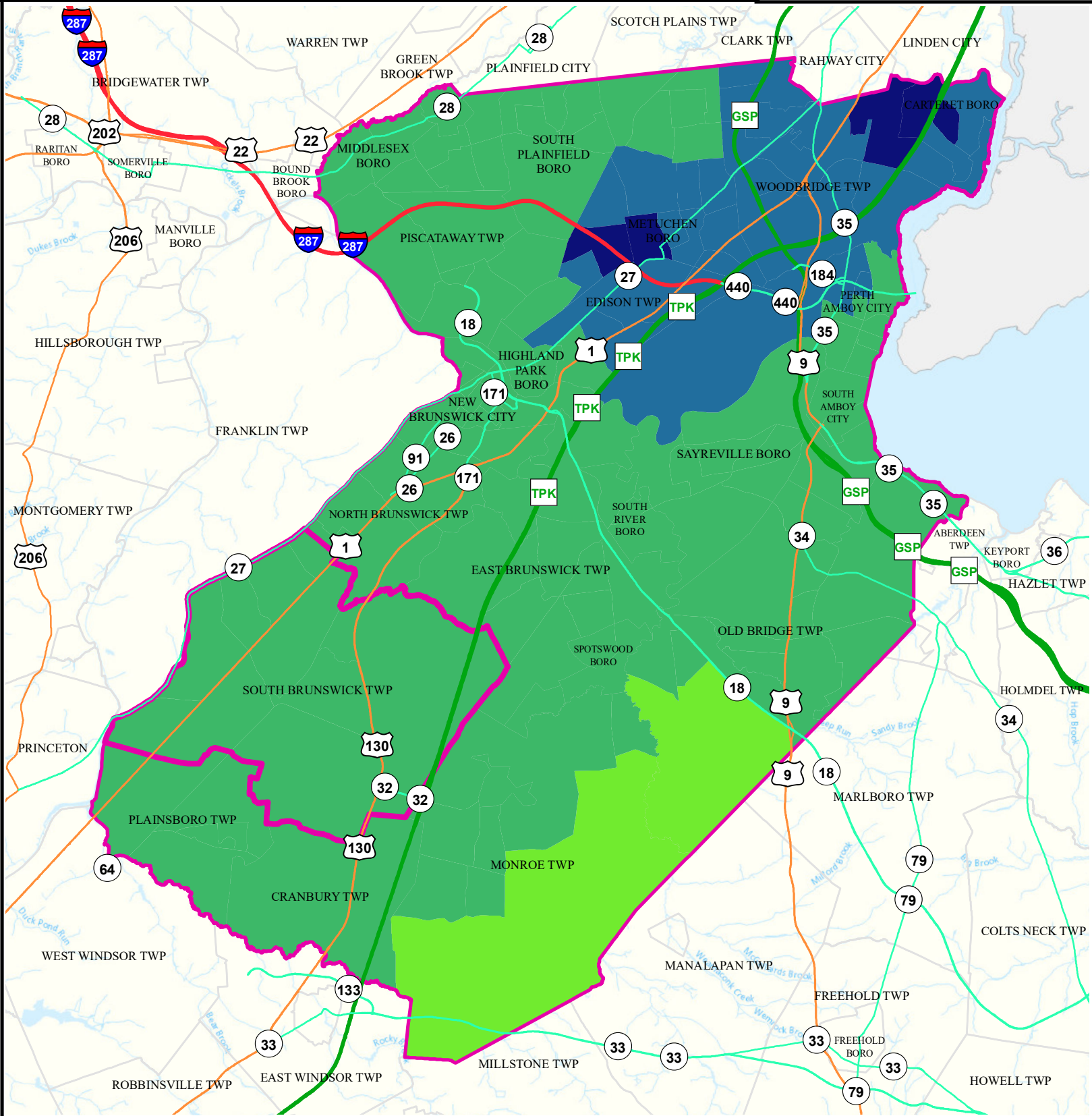
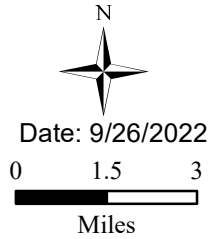
Air Non Cancer

SOUTH BRUNSWICK TWP

MIDDLESEX

Legend

	Counties		0.75 - 1.00		3.01 - 4.00
	SOUTH BRUNSWICK TWP		1.01 - 2.00		4.01 - 8.09
			2.01 - 3.00		




Air Quality Index (AQI)

SOUTH BRUNSWICK TWP

MIDDLESEX

Legend

 Municipalities

 SOUTH BRUNSWICK TWP

Average AQI Days

 0 - 1

 3.5 - 6.5

 1.5 - 3

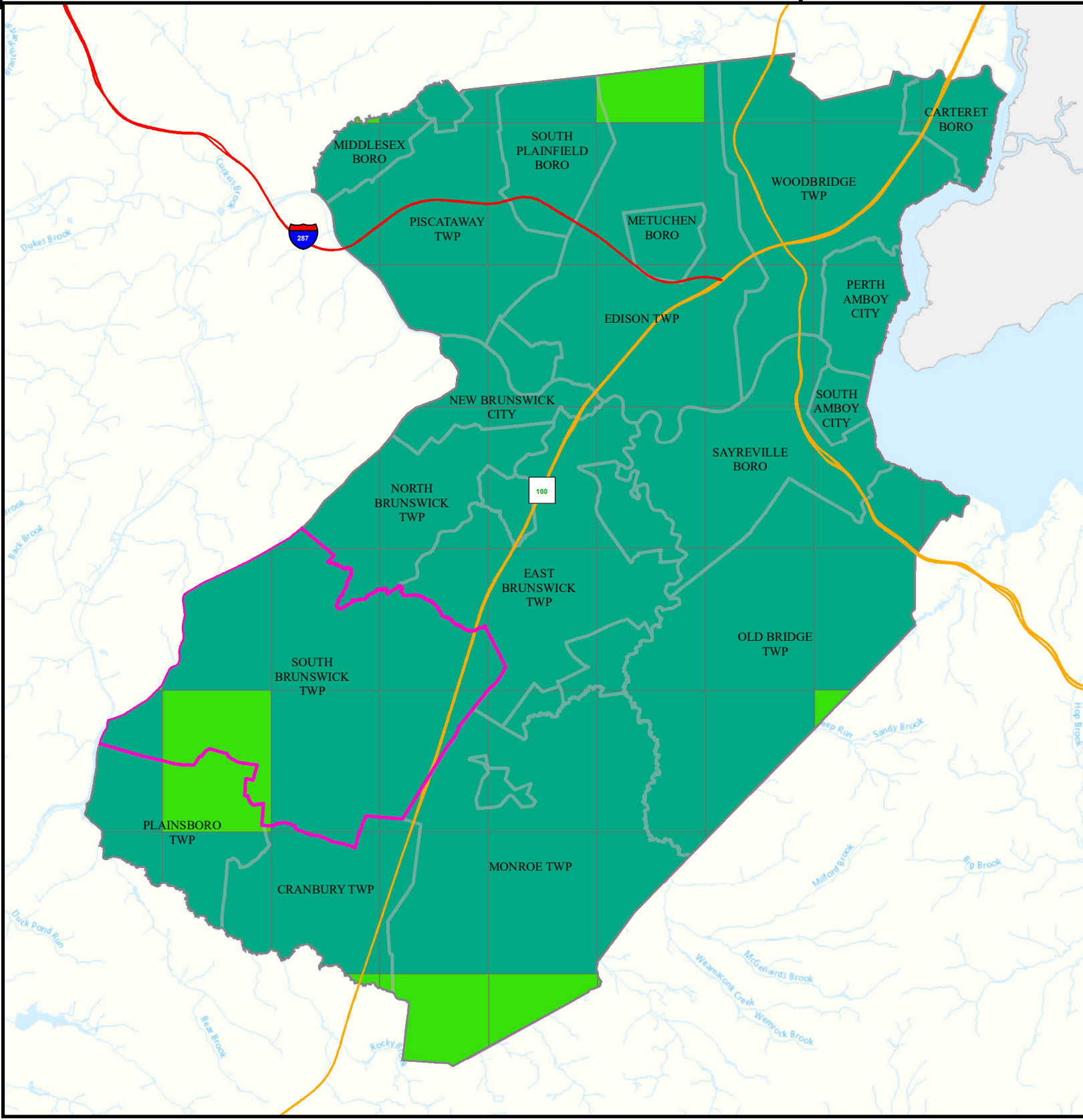
 7 - 12

Air Quality Index (AQI)
Days above 100 (3 yr Avg)
2018 to 2020



0 1.5 3
Miles

Date: 4/18/2022






Community Drinking Water

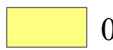
SOUTH BRUNSWICK TWP

MIDDLESEX

Legend

-  Counties
-  SOUTH BRUNSWICK TWP
-  Municipalities

**MCL and TT Violations
and AL Exceedances**

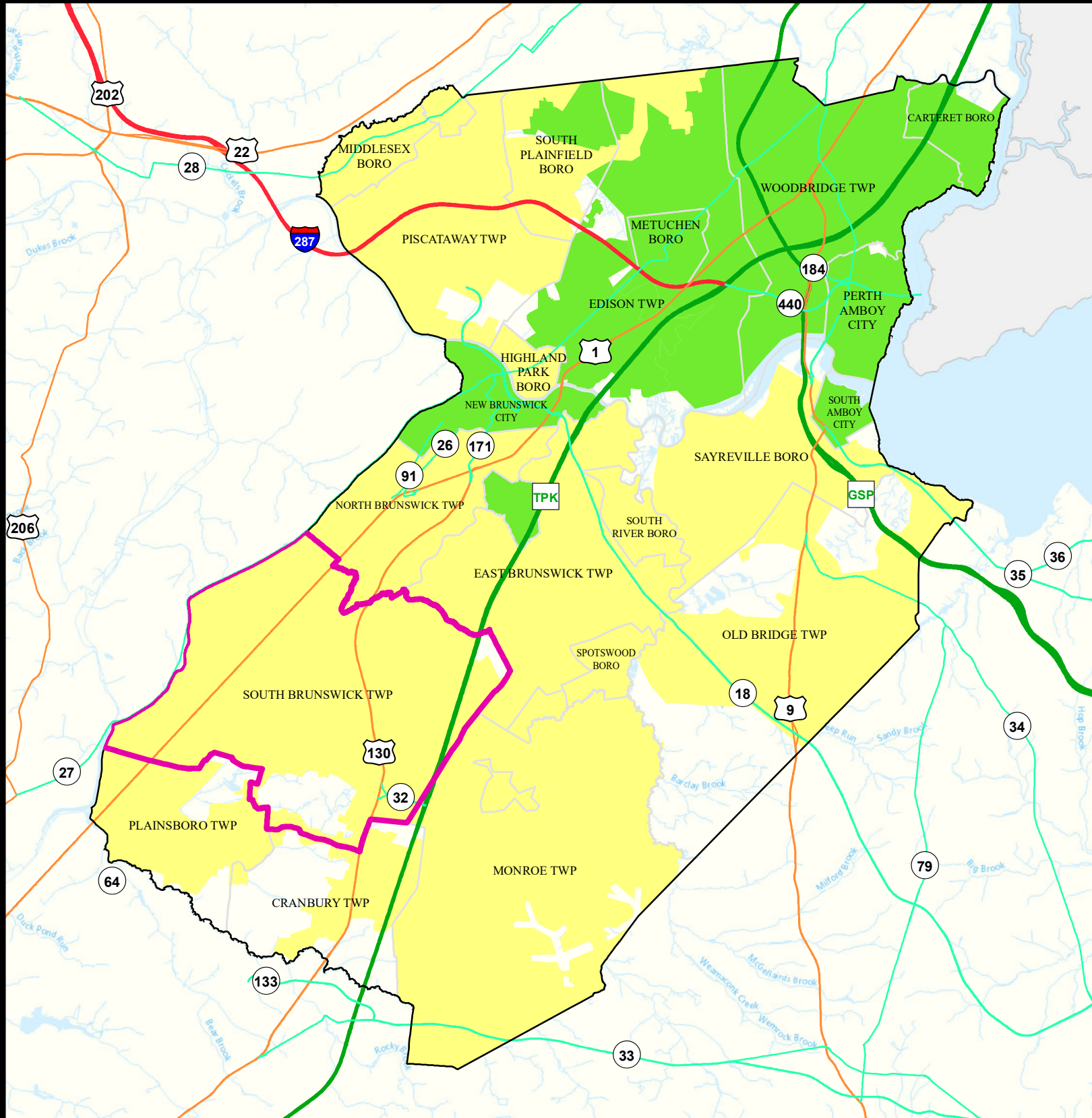
-  0
-  1 - 5
-  6 - 10
-  11 - 15
-  16 - 30



Date: 9/29/2022

0 1.5 3

Miles



Ground Water/Soil

SOUTH BRUNSWICK TWP

MIDDLESEX

Legend

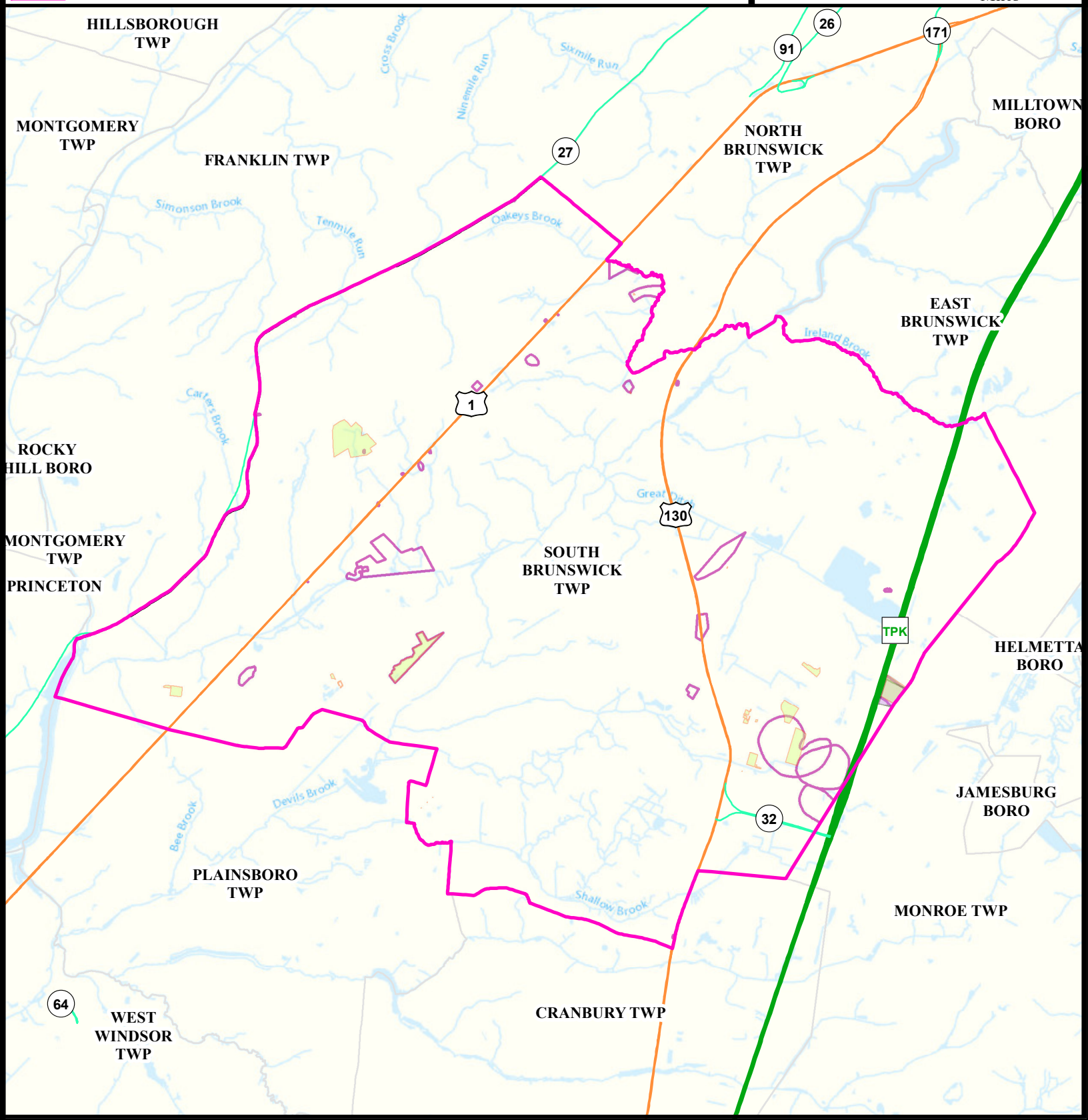
- Counties
- Municipalities
- SOUTH BRUNSWICK TWP
- Deed Notice Areas
- Groundwater Contamination Areas (CKE)
- Groundwater Contamination Areas (CEA)

N

Date: 5/24/2022

0 0.5 1

Miles



Surface Water Quality

SOUTH BRUNSWICK TWP


MIDDLESEX

Legend

- Counties
- Municipalities
- SOUTH BRUNSWICK TWP

Impaired (Percent)		
 20	 40	 66.
 25	 50	 75
 33.	 60	 80
 NA	 0	 100

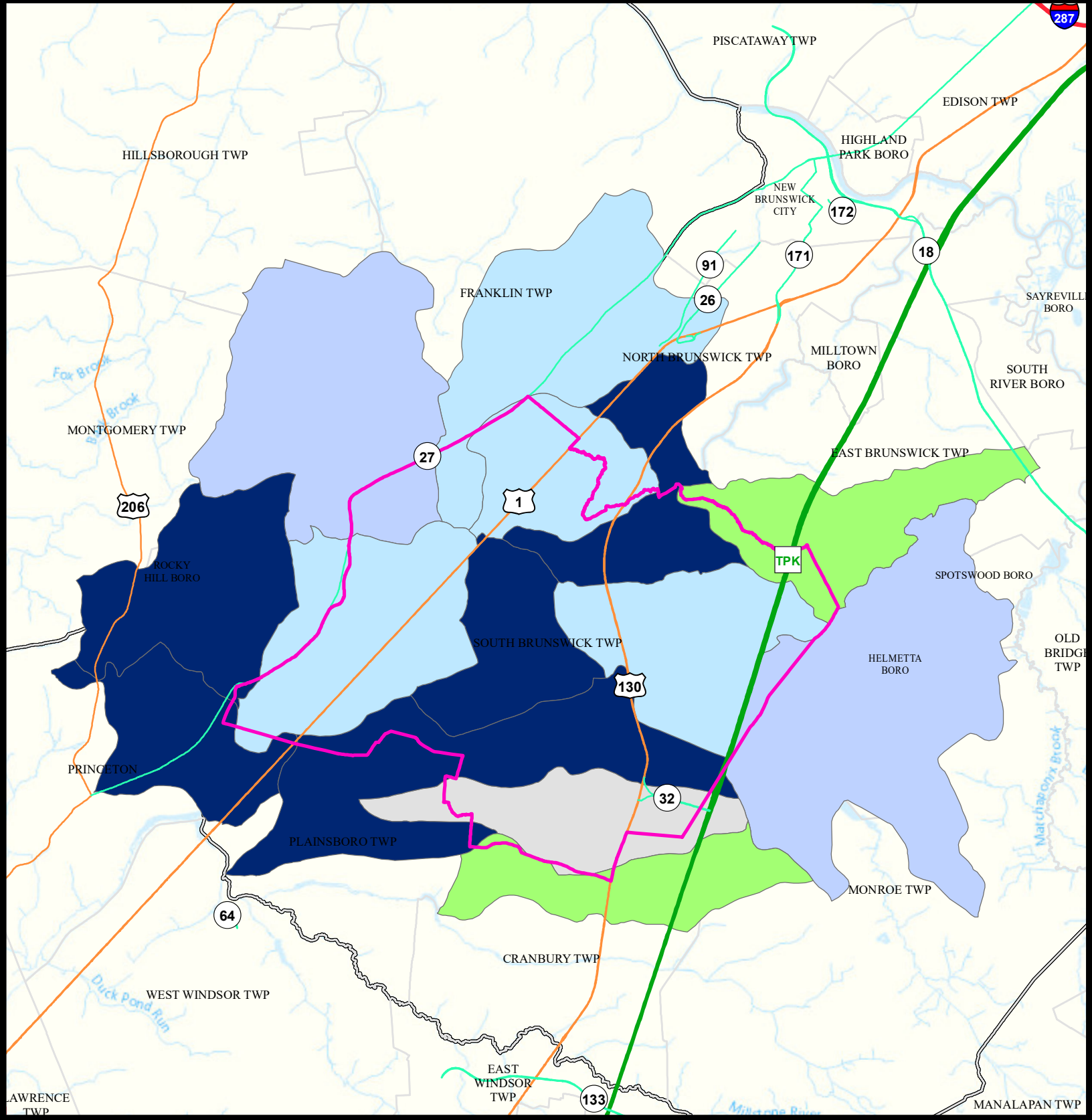
N



Date: 9/22/2022

0 1 2

Miles





What is a Designated Use?

New Jersey's [Surface Water Quality Standards \(SWQS\)](#) establish the designated uses of the State's surface waters, classify surface waters based on those uses, and specify the water quality criteria and other policies necessary to attain those uses. Designated uses include water supply for drinking, agriculture and industrial uses, fish consumption, shellfish resources, propagation of fish and wildlife, and recreation.

The table below show the designated use information for your municipality. For more information on Surface Water Quality, see the Healthy Community Planning Report for this municipality.

AU_name	Aquatic_General	Aquatic_Trout	Water_Supply	Recreation	Shellfish	Fish_Consumption
Sixmile Run (above Middlebush Rd)	Non Attaining	NA	Attaining	Non Attaining	NA	Insufficient Data
Ireland Brook	Non Attaining	NA	Attaining	Insufficient Data	NA	Insufficient Data
Millstone R (HeathcoteBk to Harrison St)	Non Attaining	NA	Non Attaining	Non Attaining	NA	Non Attaining
Millstone R (BlackwellsMills to BedenBk)	Non Attaining	NA	Non Attaining	Attaining	NA	Non Attaining
Millstone R (Beden Bk to Heathcote Bk)	Non Attaining	NA	Non Attaining	Non Attaining	NA	Insufficient Data
Manalapan Brook (below Lake Manalapan)	Attaining	NA	Non Attaining	Non Attaining	NA	Non Attaining
Shallow Brook (Devils Brook)	Attaining	NA	Insufficient Data	Attaining	NA	Insufficient Data
Lawrence Bk (above Deans Pond dam)	Non Attaining	NA	Non Attaining	Insufficient Data	NA	Insufficient Data
Devils Brook	Non Attaining	NA	Non Attaining	Non Attaining	NA	Insufficient Data
Oakeys Brook	Attaining	NA	Non Attaining	Non Attaining	NA	Insufficient Data
Cedar Brook (Cranbury Brook)	Non Attaining	NA	Insufficient Data	Attaining	NA	Insufficient Data
Lawrence Bk (Church Lane to Deans Pond)	Non Attaining	NA	Non Attaining	Non Attaining	NA	Non Attaining
Heathcote Brook	Non Attaining	NA	Attaining	Non Attaining	NA	Insufficient Data
Great Ditch / Pigeon Swamp	Attaining	NA	Non Attaining	Non Attaining	NA	Insufficient Data

Flooding (Urban Land Cover)

SOUTH BRUNSWICK TWP

MIDDLESEX

Legend

Counties

SOUTH BRUNSWICK TWP

Municipalities

Urban Land

Urban Land Flooded

Toll Road

Interstate

US Highway

State Highway

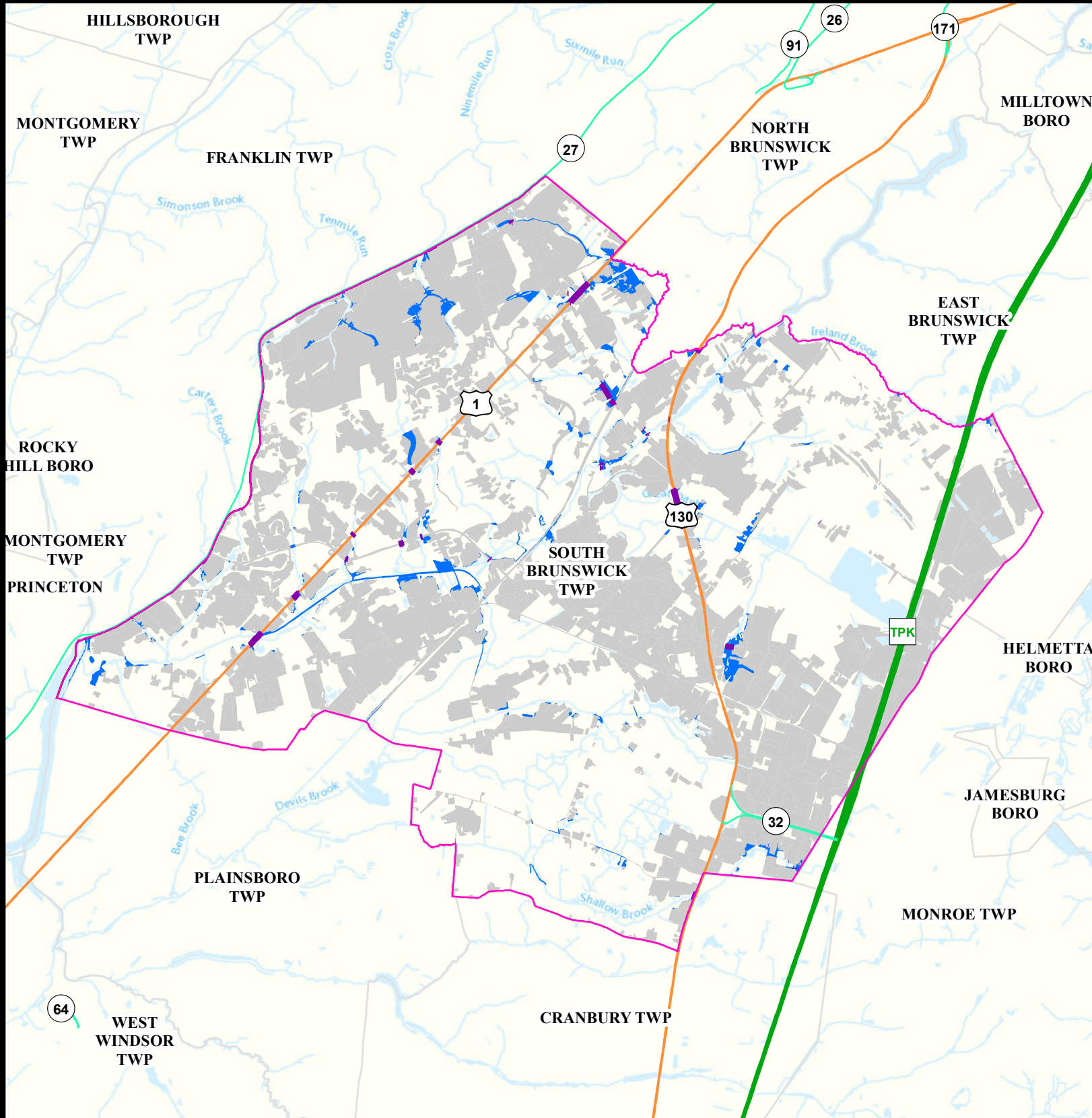
Impacted Roads

Impacted roads show only county level or higher routes in flooding areas.

Date: 4/12/2022

0 0.5 1

Miles



Air Permit Sources

SOUTH BRUNSWICK TWP

MIDDLESEX

Legend

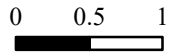
- Counties
- SOUTH BRUNSWICK TWP

Facility Type

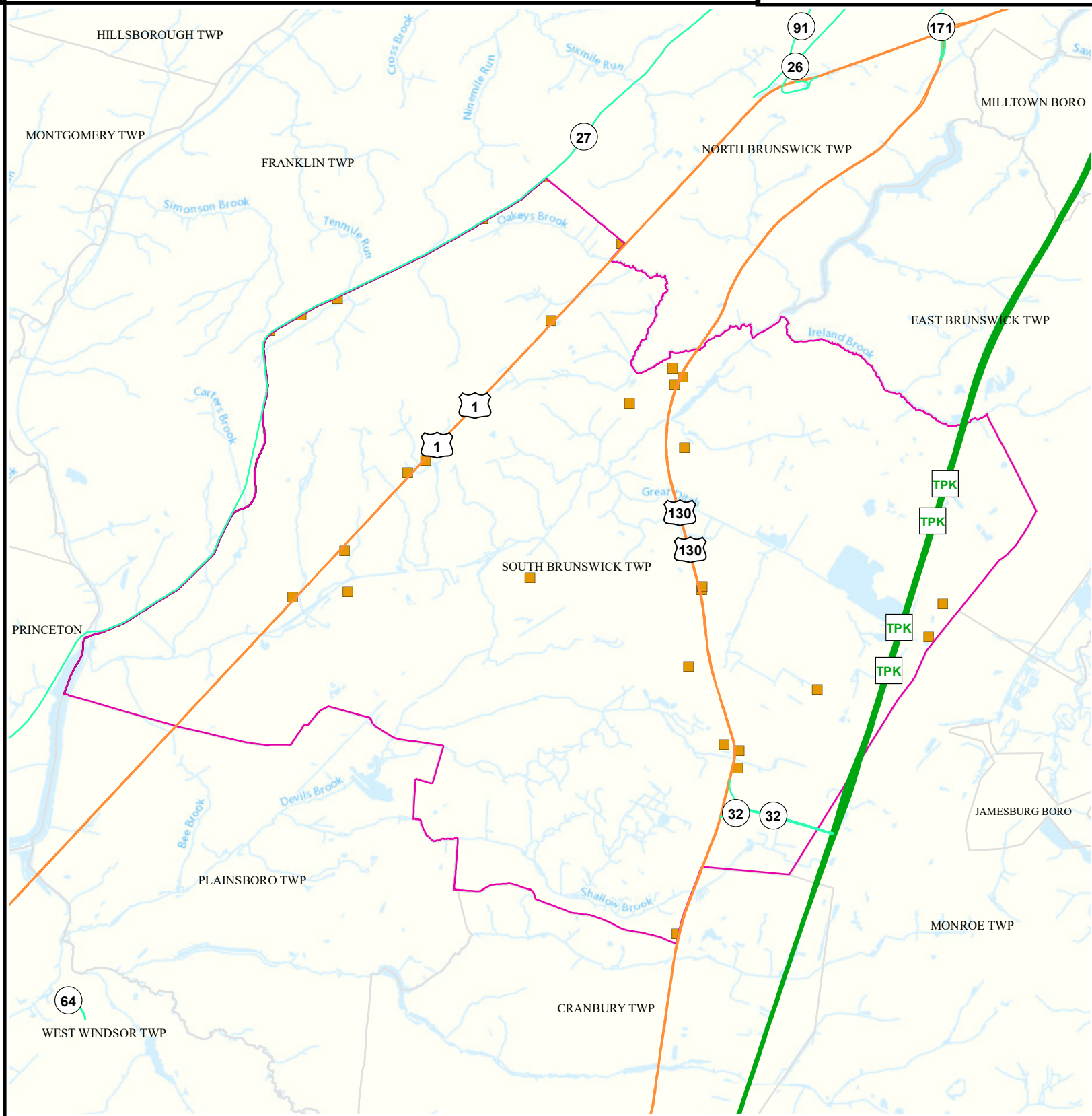
- Major
- Minor



Date: 4/12/2022



Miles



Contaminated Sites

SOUTH BRUNSWICK TWP

MIDDLESEX

Legend

- Counties
- SOUTH BRUNSWICK TWP
- Municipalities

Known Contaminated Sites

Density Weighting

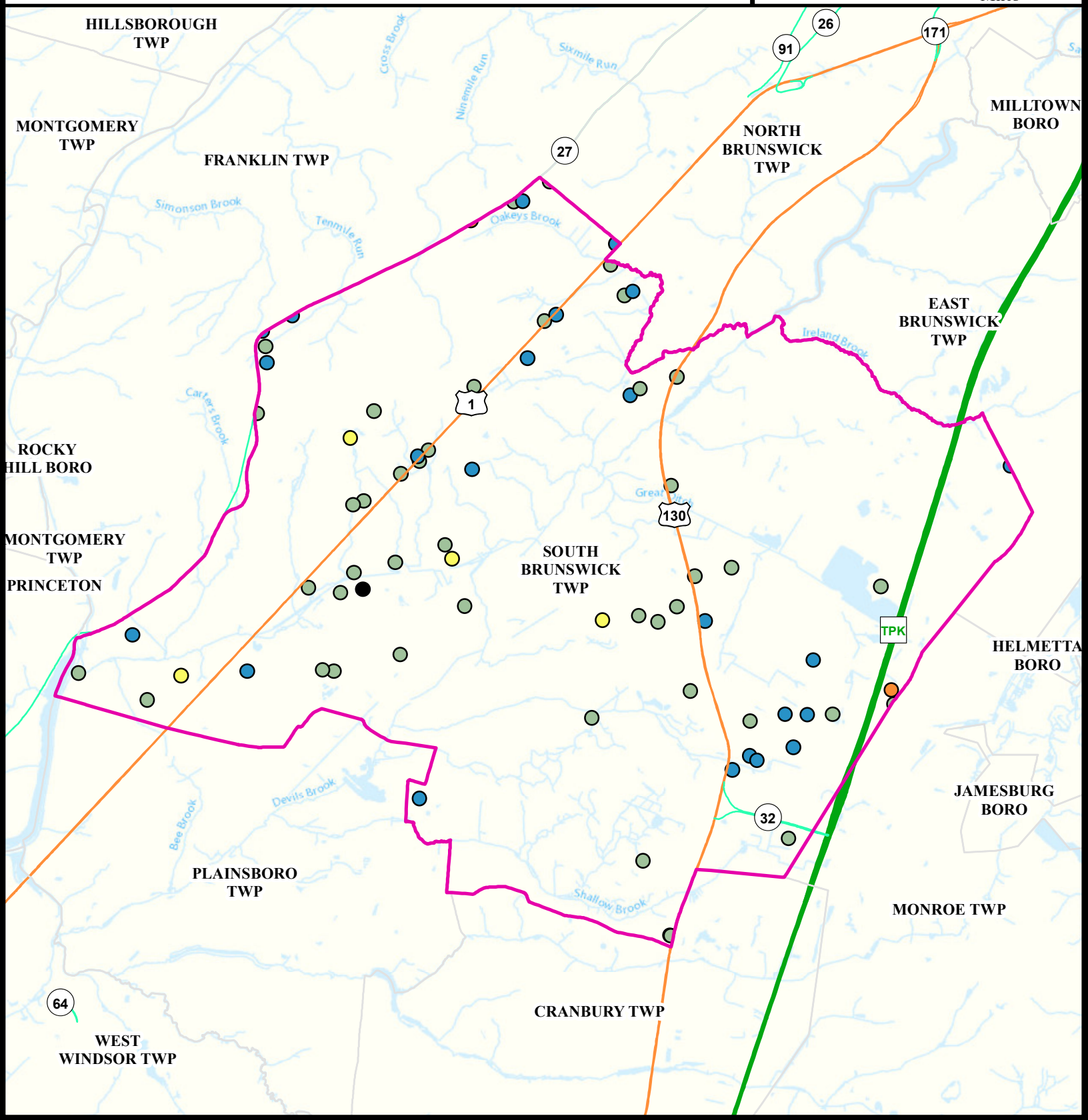
- 0
- 1
- 2
- 3
- Other



Date: 5/24/2022

0 0.5 1

Miles






Scrap Metal Facilities




SOUTH BRUNSWICK TWP

MIDDLESEX

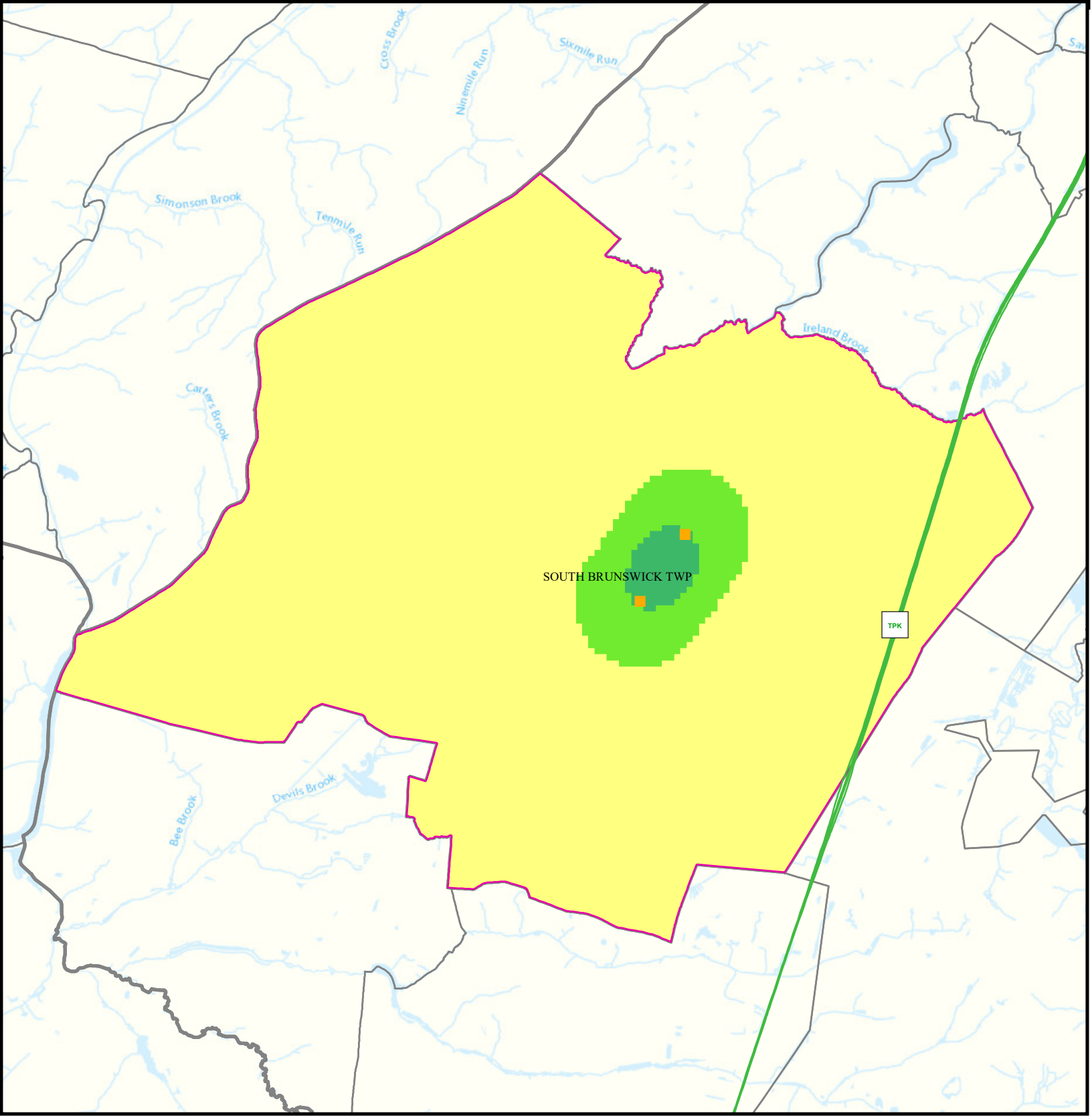
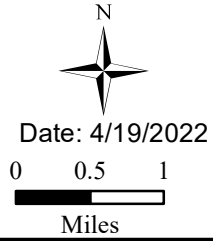
Legend

-  Municipalities
-  SOUTH BRUNSWICK TWP
-  Scrap Metal Facility

Sites Per Square Mile

- | | |
|--|---|
|  0 - 0.29 |  2.3 - 4.4 |
|  0.30 - 1.1 |  4.5 - 8.3 |
|  1.2 - 2.2 | |

Scrap Metal Processing
Sites per Sq Mile
2022



Open Space

SOUTH BRUNSWICK TWP


MIDDLESEX

Legend

 Counties

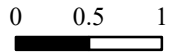
 SOUTH BRUNSWICK TWP

 Open Space

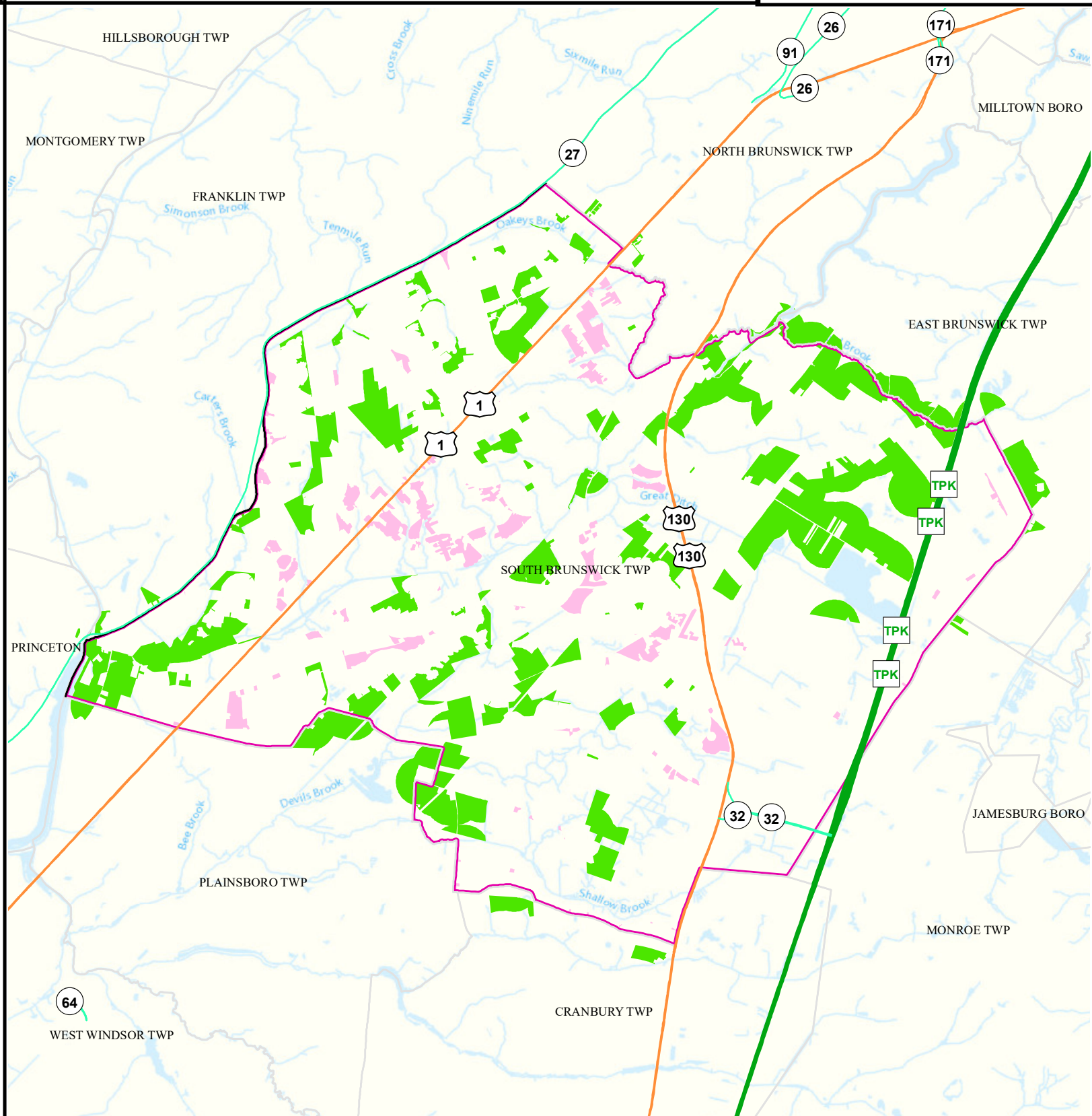
 Residential Population
> 1/4 Mile from Open Space



Date: 9/27/2022



Miles



Traffic


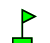

SOUTH BRUNSWICK TWP

MIDDLESEX


Legend

- Counties
- SOUTH BRUNSWICK TWP
- 1000 ft. Road Buffer

- Daily Traffic Volume**
- 25,000 - 50,000
 - 50,001 - 75,000
 - 75,001 - 100,000
 - 100,001 - 125,000
 - 125,000+


Receptors	Count
 Childcare	7
 School	2
 Population	3400

N

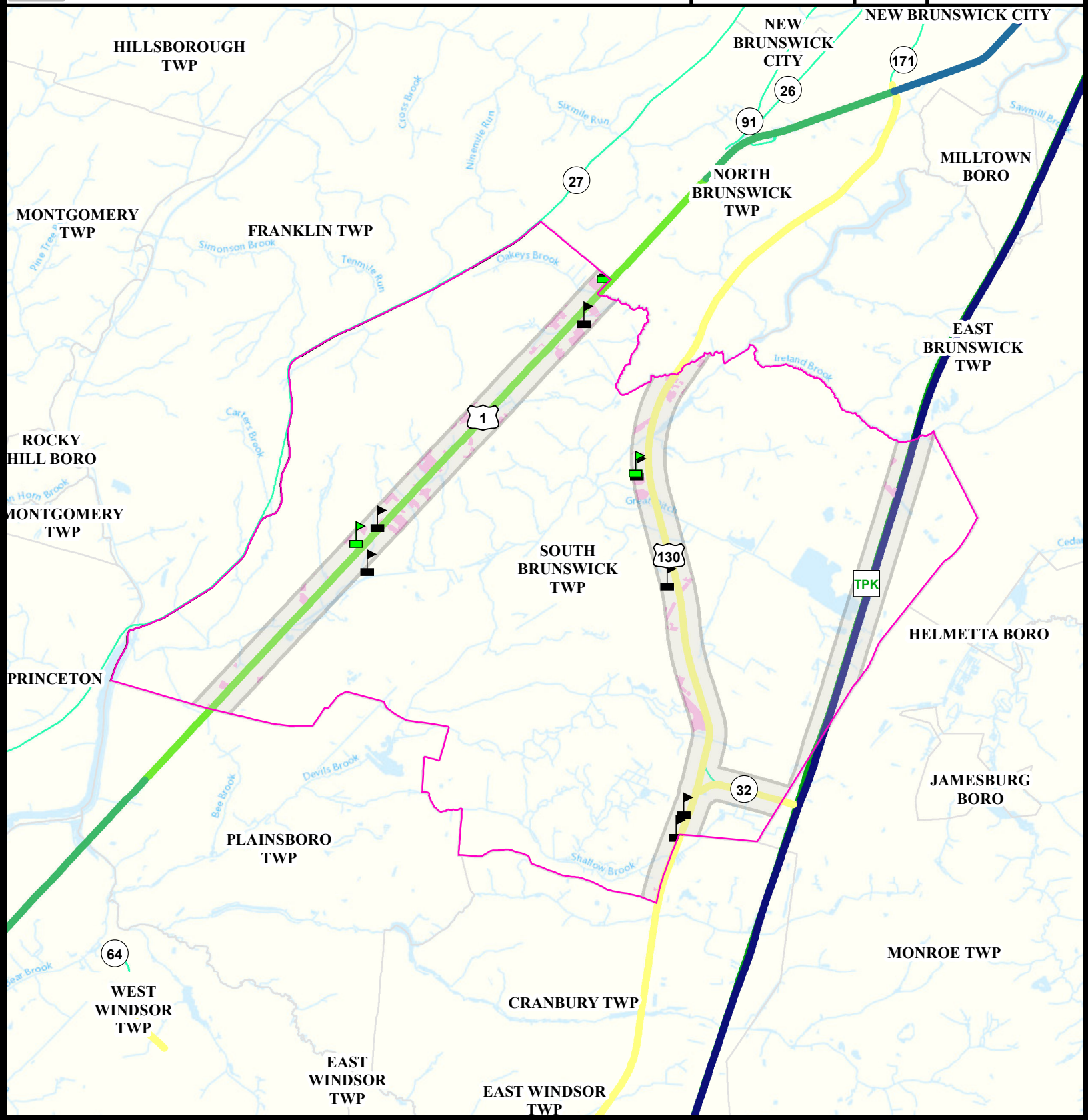


Date: 4/19/2022

0 0.5 1



Miles



Low Birth Weight

South Brunswick Twp

Middlesex

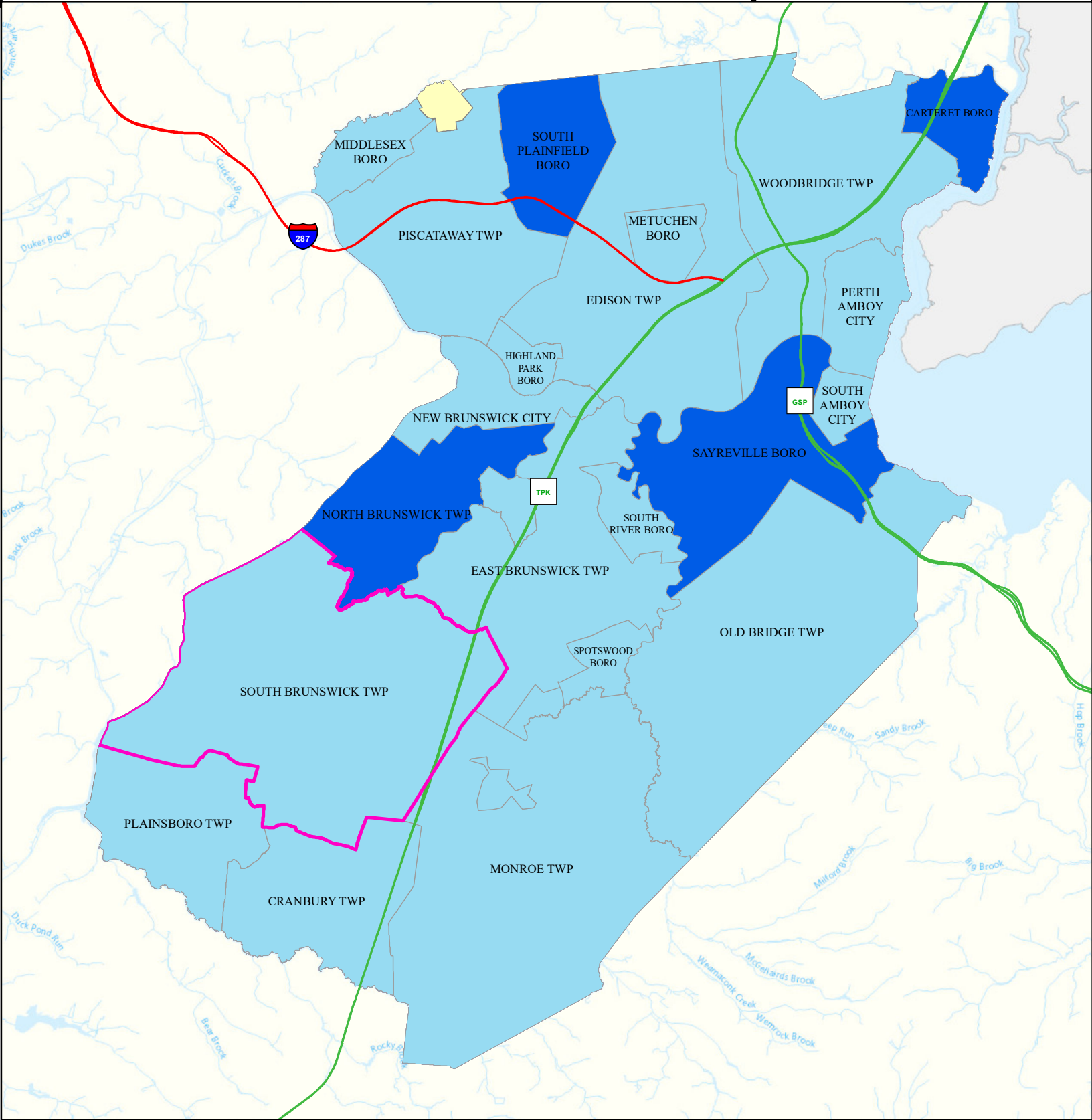
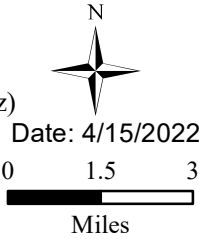
Legend

- Municipalities
- South Brunswick Twp

State Comparison

- Above
- Below
- No Difference
- Suppressed

Birth Rate
Low Birth Weight
(% All Births < 5 lb, 8 oz)
2016 to 2020



Age of Housing

SOUTH BRUNSWICK TWP

MIDDLESEX

Legend

- Counties
- Municipalities
- SOUTH BRUNSWICK TWP**

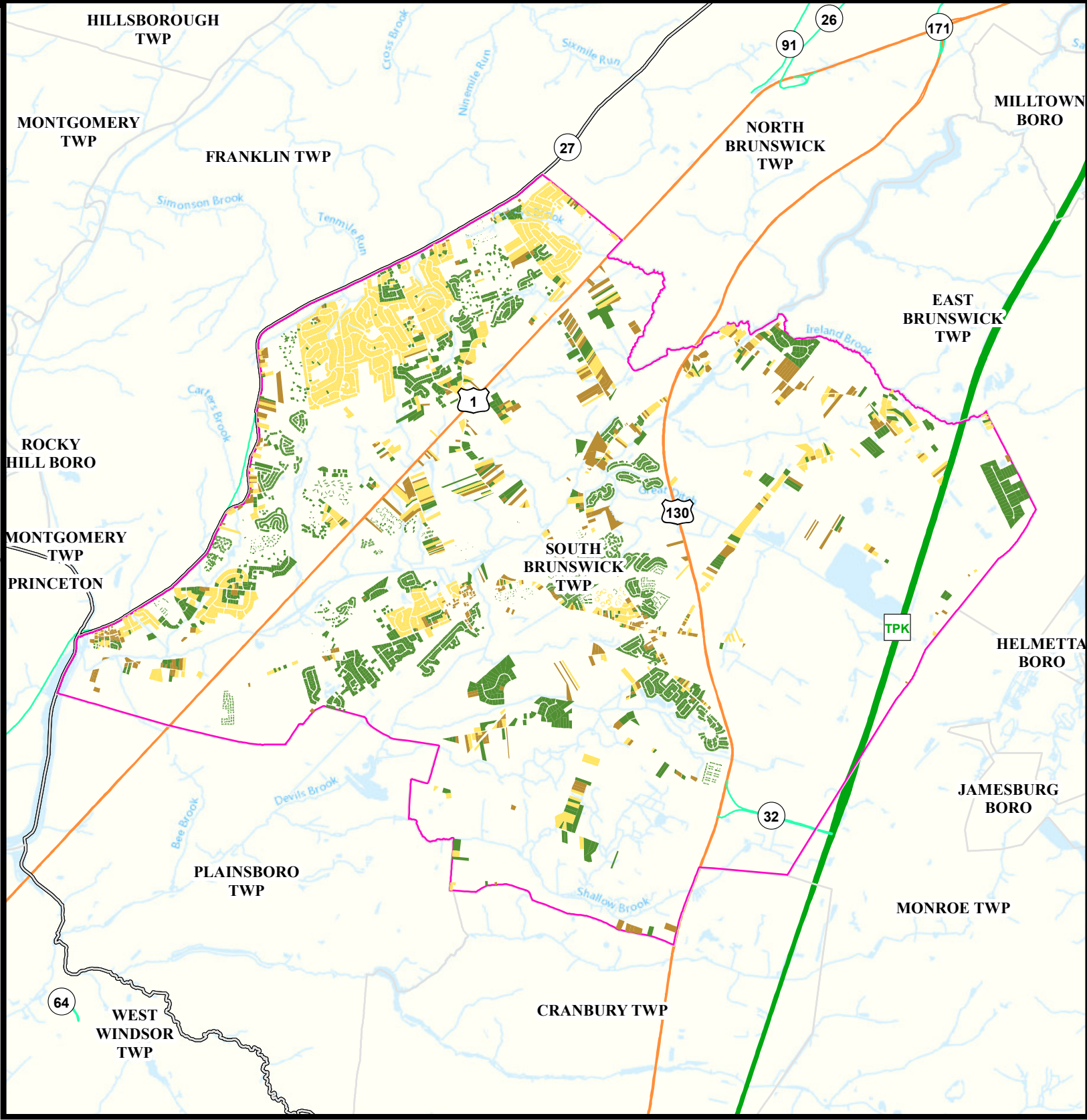
- Year House Constructed**
- Pre 1950
 - Between 1951 and 1978
 - After 1978
 - Unknown

N

Date: 4/12/2022

0 0.5 1

Miles



Asthma (Emergency Department)

South Brunswick Twp

Middlesex

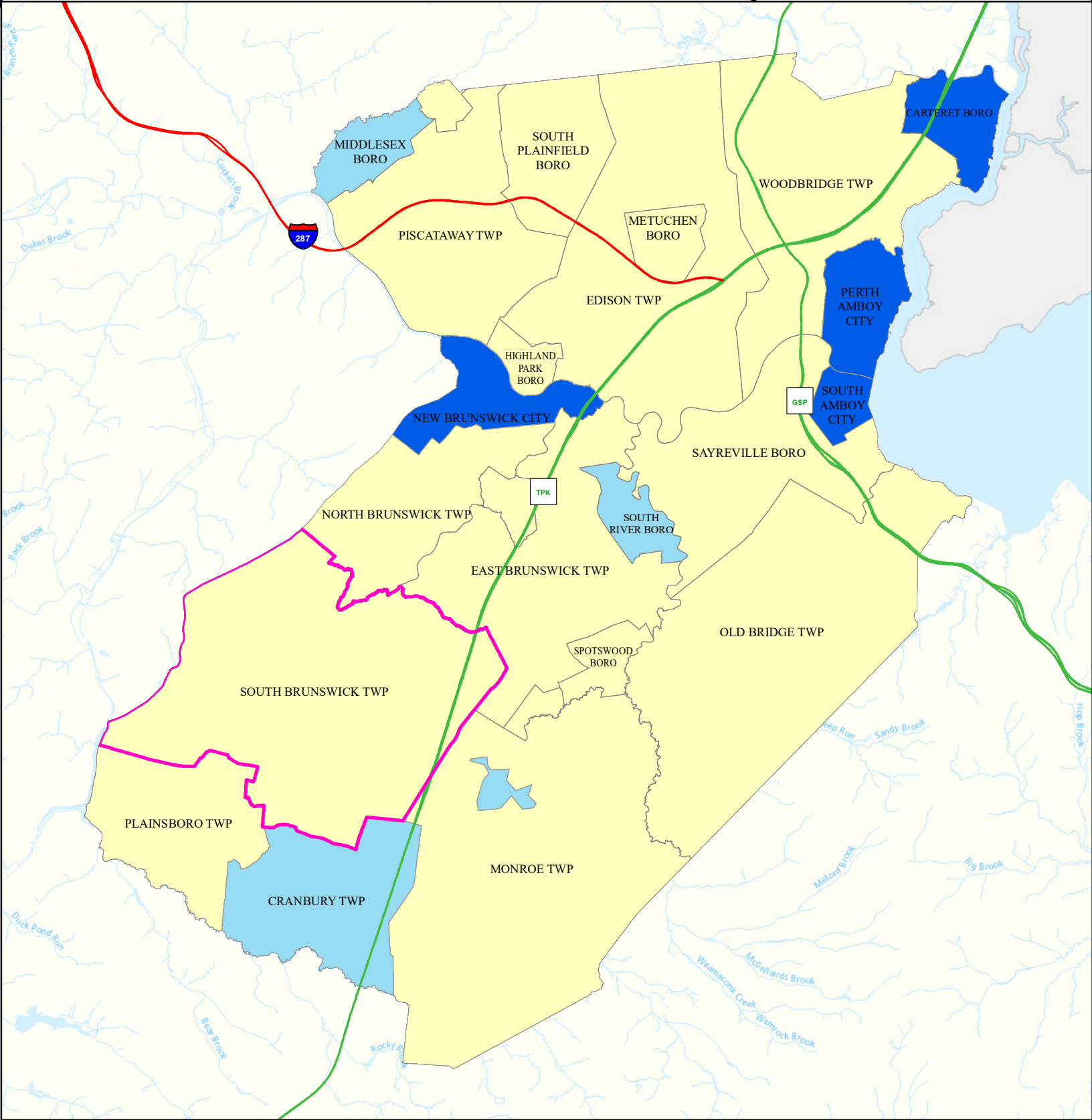
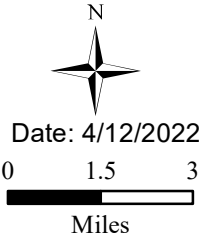
Legend

- Municipalities
- South Brunswick Twp

State Comparison

- Above
- No Difference
- Below
- Suppressed

Age-adjusted Rate
per 10,000 People
2016 to 2019
Emergency Department
Visits for Asthma





Heart Attack (AMI) (Inpatient)





South Brunswick Twp

Middlesex

Legend

-  Municipalities
-  South Brunswick Twp



State Comparison

-  Above
-  No Difference
-  Below
-  Suppressed

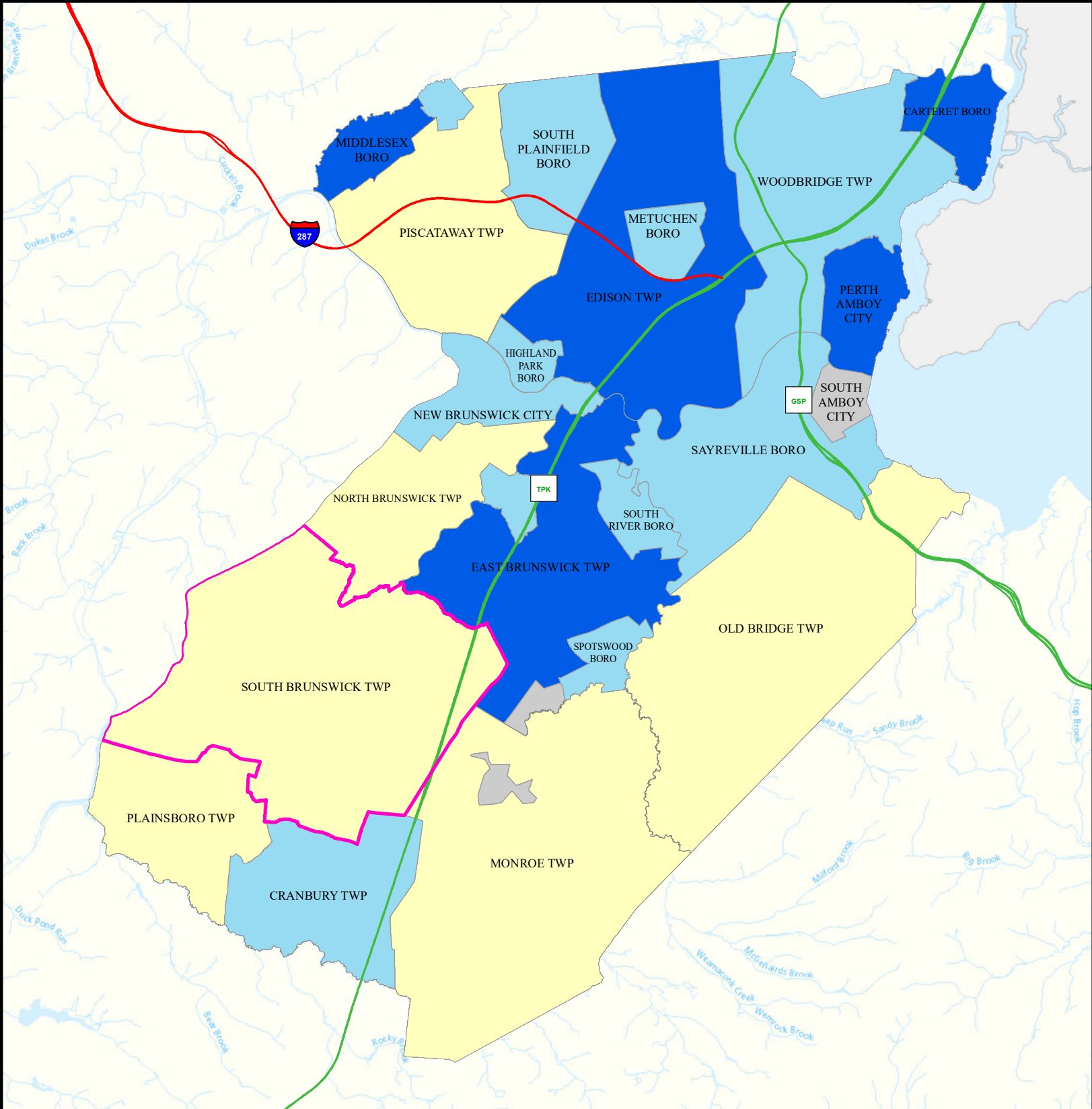
Age-adjusted Rate
per 10,000 People
2016 to 2019

Inpatient Visits for AMI
(Acute Myocardial Infarction) 0 1.25 2.5

Date: 4/11/2022

Miles



Heart Disease Deaths

South Brunswick Twp

Middlesex

Legend

- Municipalities
- South Brunswick Twp

State Comparison

- Above
- No Difference
- Below
- Suppressed

Age-adjusted Death Rate
per 100,000 People
2015 to 2019

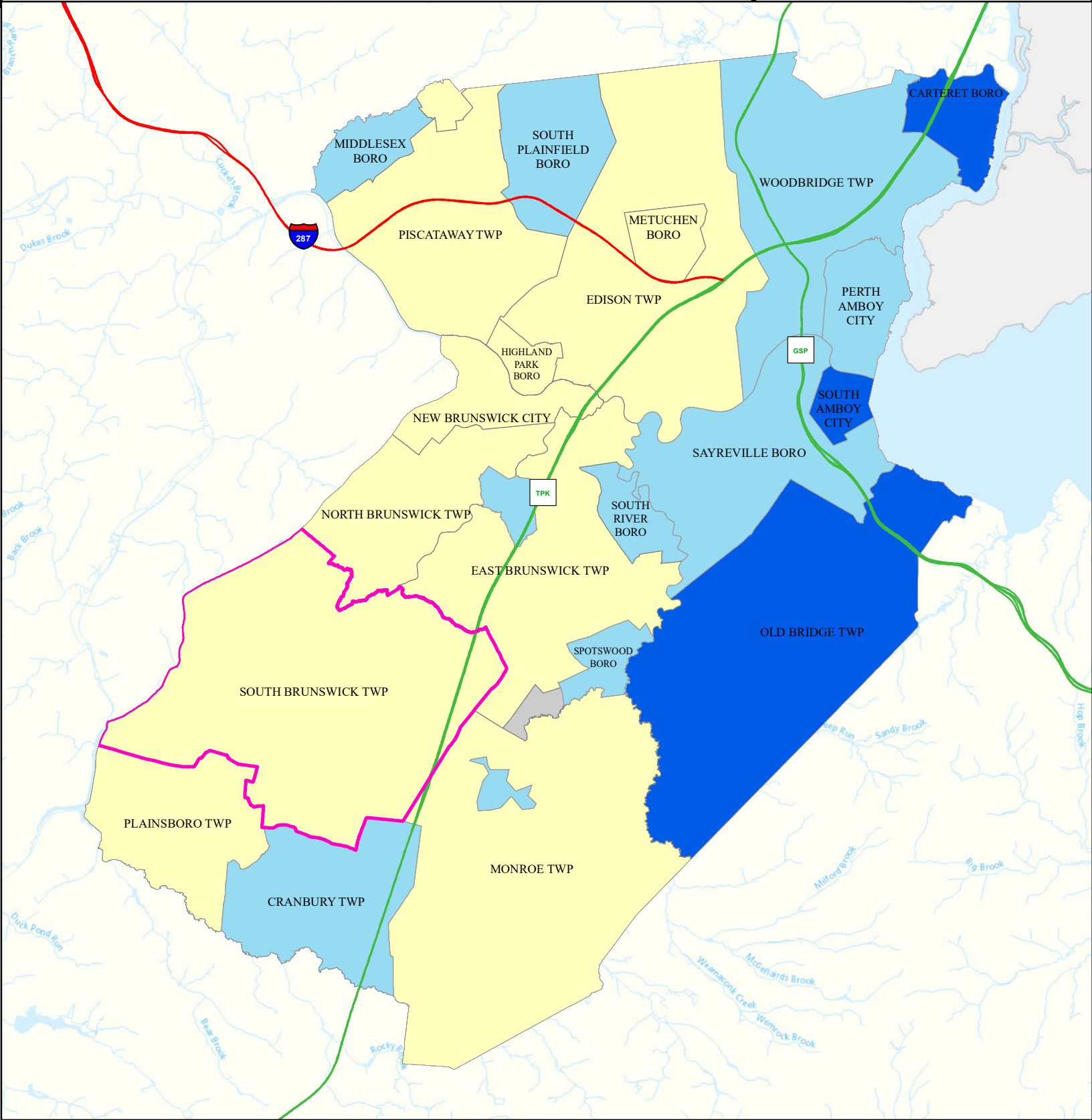
Deaths for Heart Disease

Date: 4/16/2022

0 1.5 3



Miles



COPD (Emergency Department)

South Brunswick Twp

Middlesex

Legend

- Municipalities
- South Brunswick Twp

State Comparison

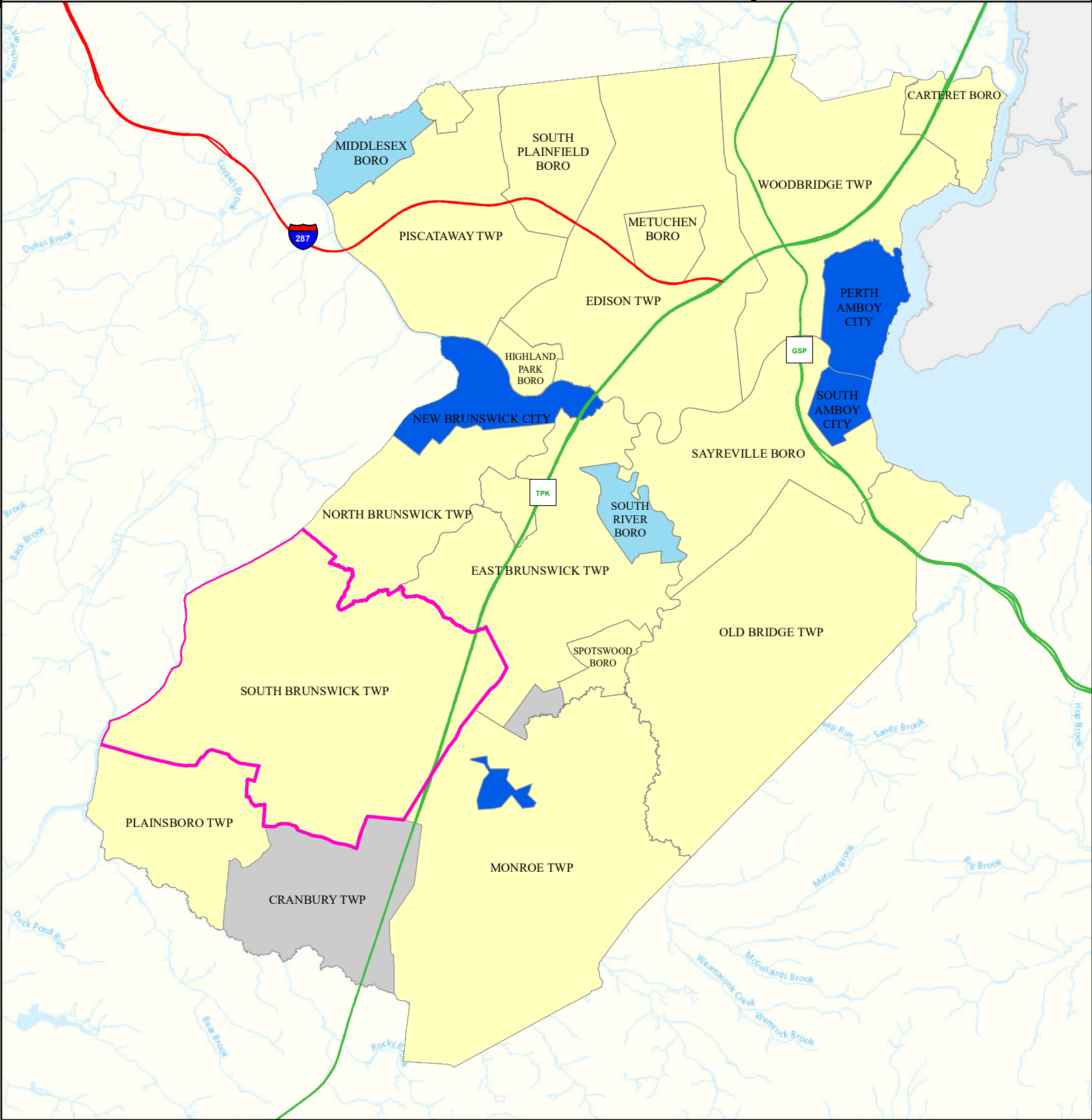
- Above
- Below
- No Difference
- Suppressed

Age-adjusted Rate
per 10,000 People
2016 to 2019
Emergency Department
Visits for COPD

Date: 6/29/2023
0 1.5 3



Miles





Stroke (Inpatient)





South Brunswick Twp

Middlesex

Legend

-  Municipalities
-  South Brunswick Twp

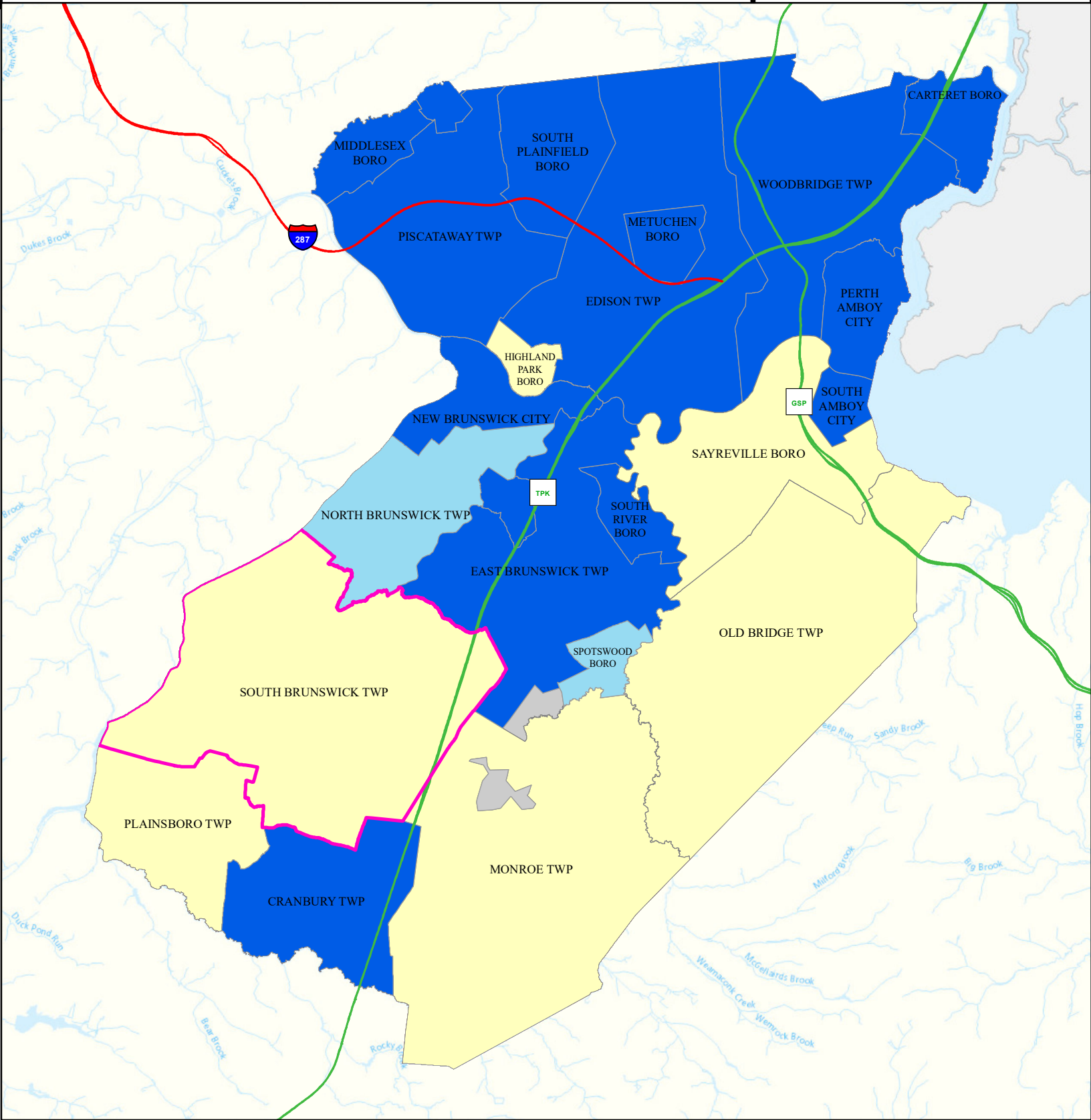
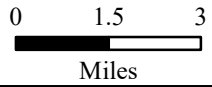
State Comparison

-  Above
-  No Difference
-  Below
-  Suppressed

Age-adjusted Rate
per 10,000 People
2016 to 2019
Inpatient Visits
for Stroke



Date: 4/14/2022





All Cancer Deaths





South Brunswick Twp

Middlesex

Legend

-  Municipalities
-  South Brunswick Twp

State Comparison

-  Above
-  No Difference
-  Below
-  Suppressed

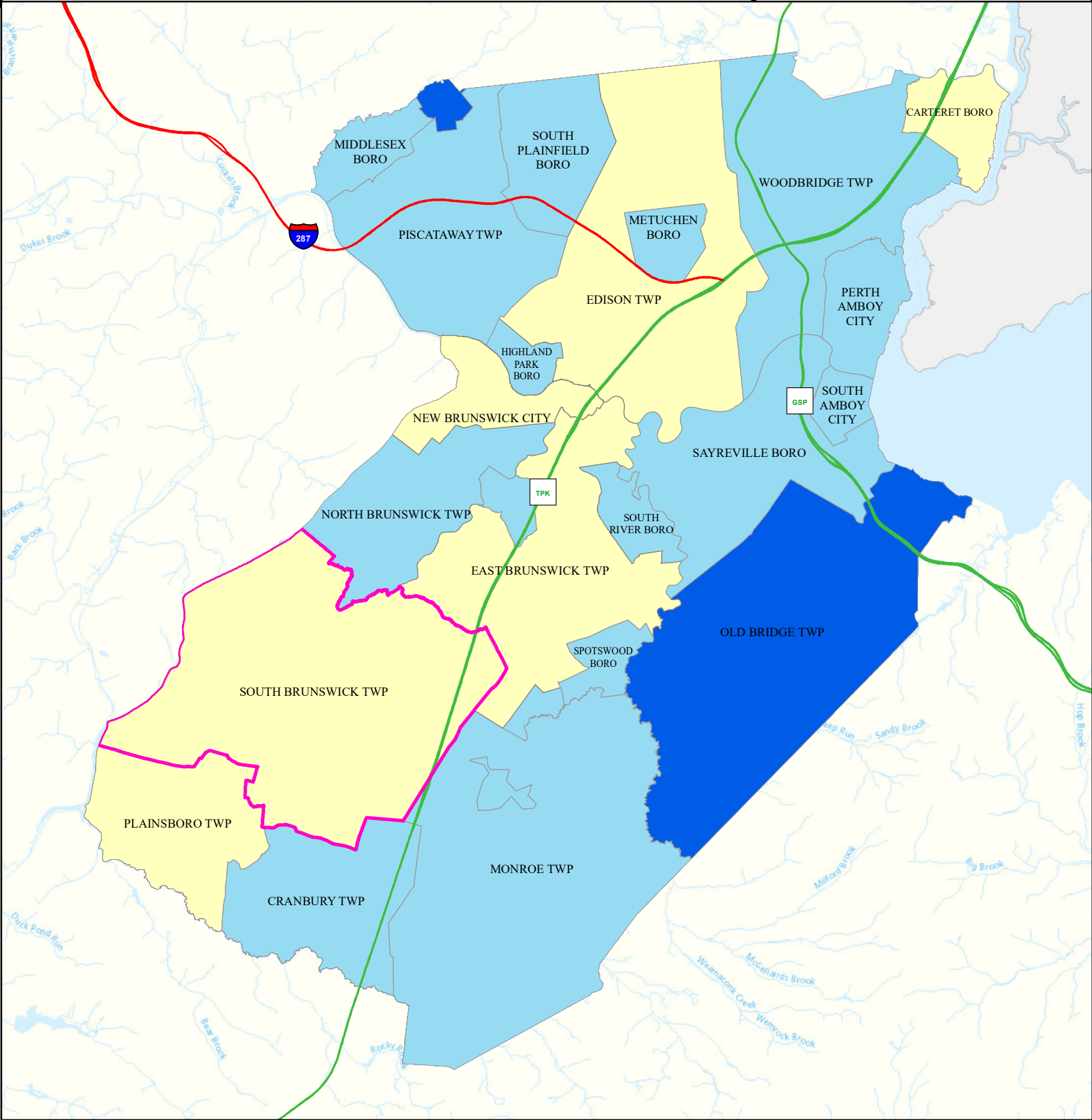
Age-adjusted Death Rate
per 100,000 People
2015 to 2019
Deaths for Cancer



Date: 4/17/2022

0 1.5 3

Miles





Lung Cancer Deaths





South Brunswick Twp

Middlesex

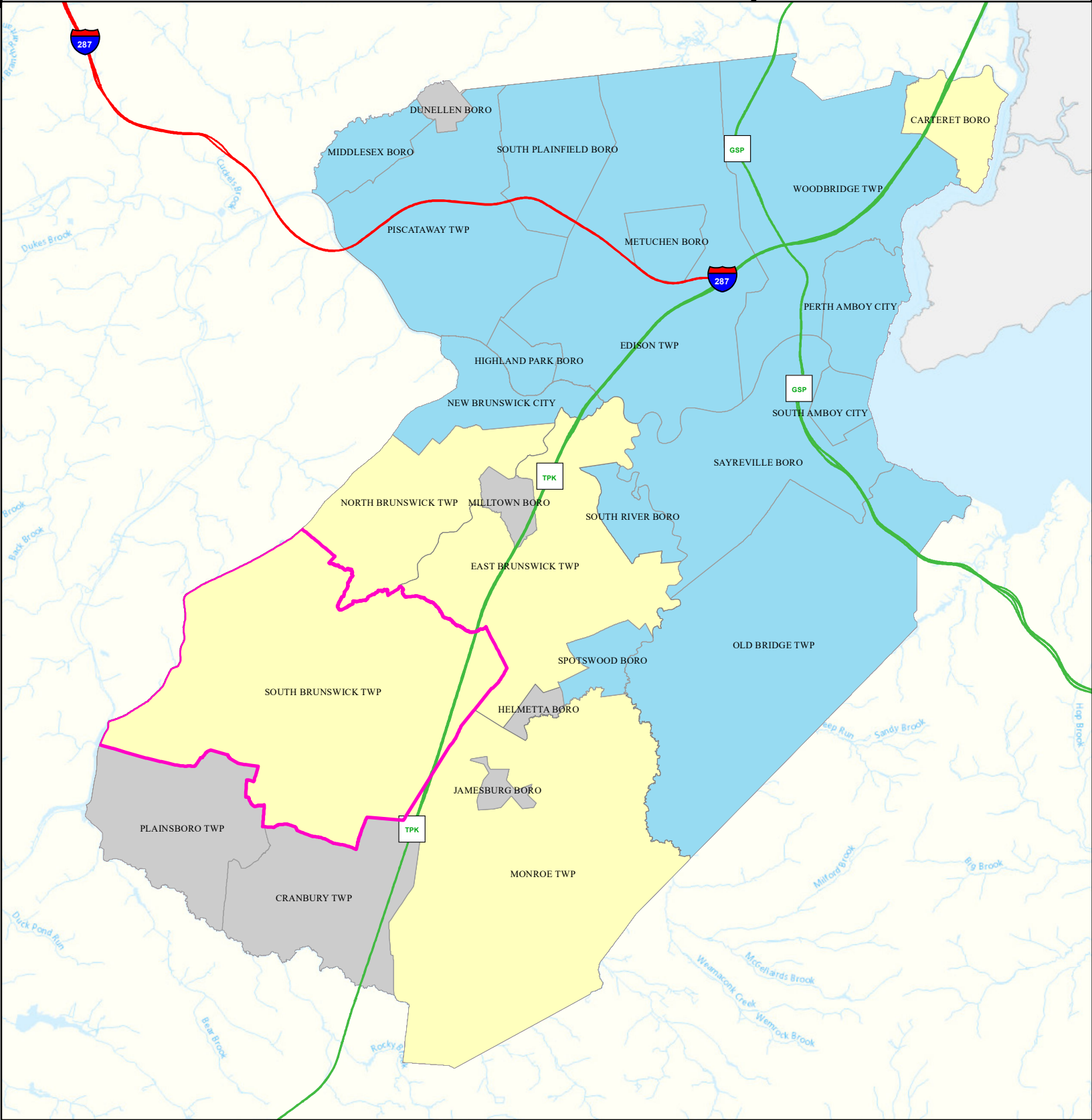
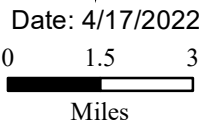
Legend

-  Municipalities
-  South Brunswick Twp

State Comparison

-  Above
-  No Difference
-  Below
-  Suppressed

Age-adjusted Death Rate
per 100,000 People
2015 to 2019
Deaths for Lung Cancer





Smoking





South Brunswick Twp

Middlesex

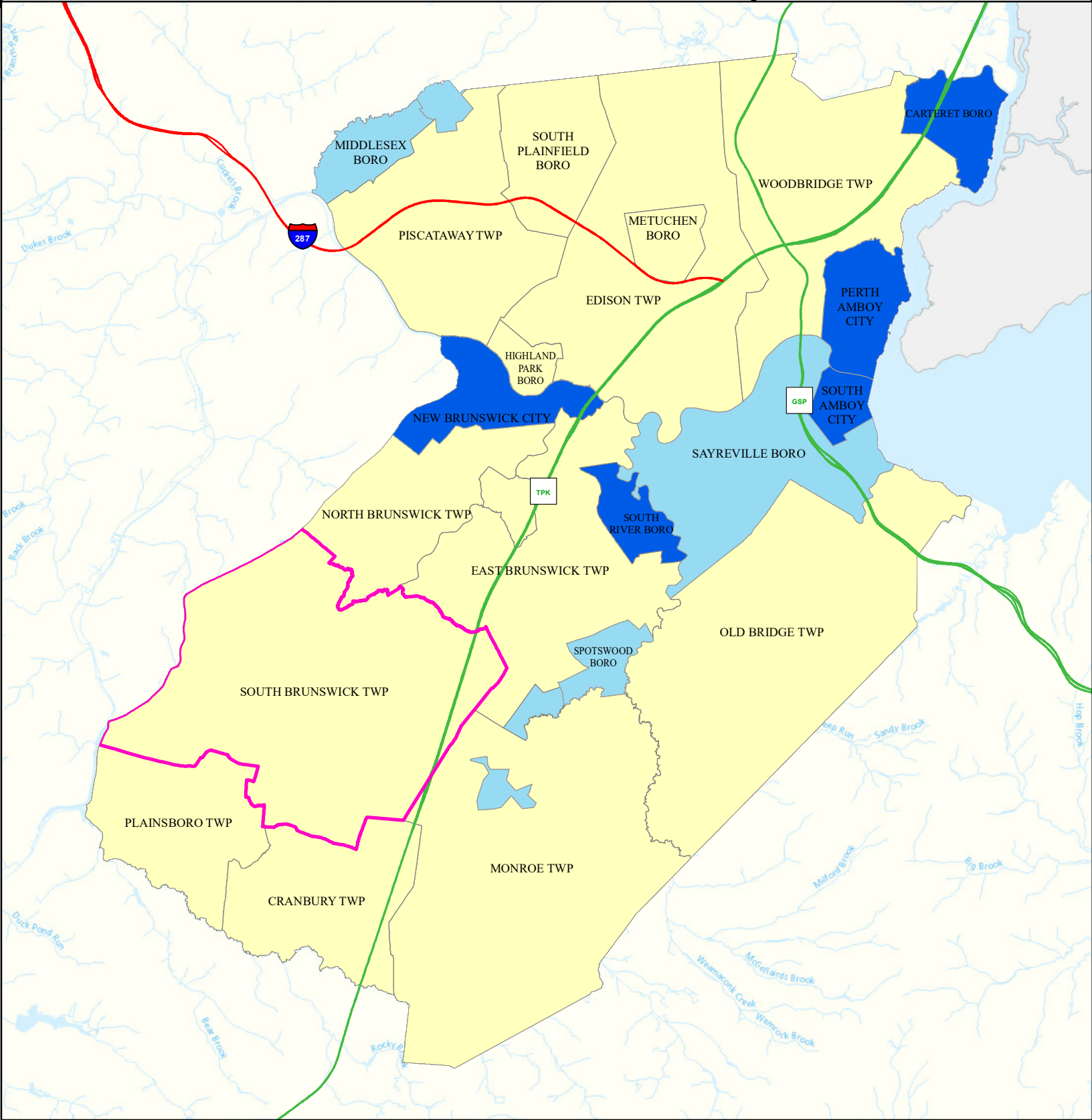
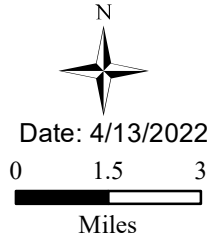
Legend

-  Municipalities
-  South Brunswick Twp

State Comparison

-  Above
-  No Difference
-  Below
-  Suppressed

Smoking Rate
Per Municipal
% of Adults
2018





Obesity

South Brunswick Twp

Middlesex

Legend

-  Municipalities
-  South Brunswick Twp

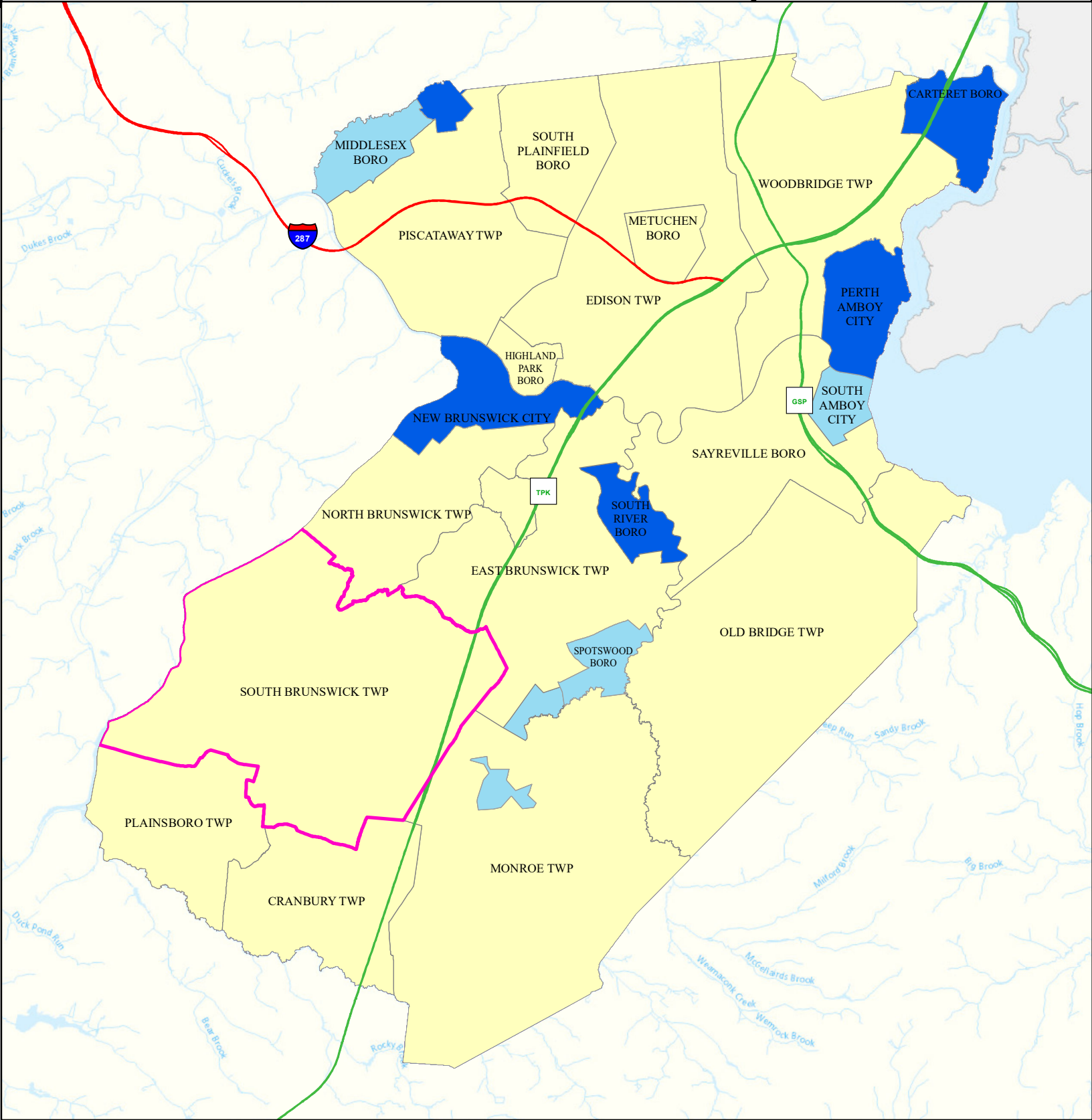
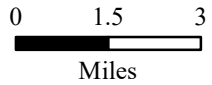
State Comparison

-  Above
-  No Difference
-  Below
-  Suppressed

Obesity Rate
Per Municipal
% of Adults
2018



Date: 4/14/2022





Heat Related Illness (Emergency Department)

South Brunswick Twp

Middlesex

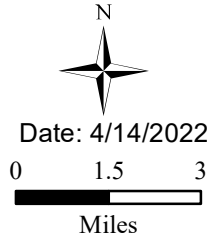
Legend

-  Municipalities
-  South Brunswick Twp

State Comparison

-  Above
-  Below
-  No Difference
-  Suppressed

Age-adjusted Rate
per 10,000 People
2016 to 2019
Emergency Department
Visits for
Heat Related Illness



Date: 4/14/2022

Miles

